



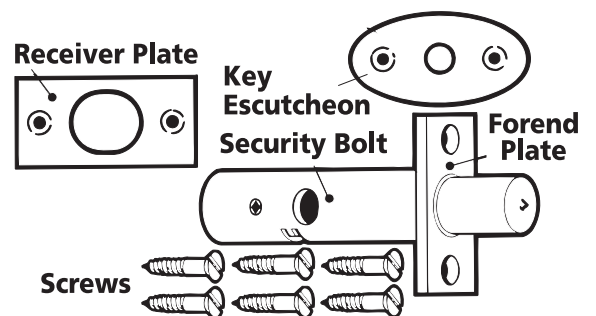
838

Door Security Bolt Fitting Instructions

Installing a Door Security Bolt

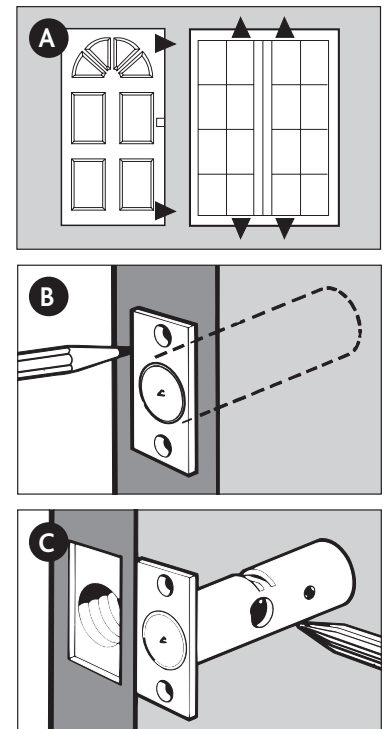
To fit a Door Security Bolt you will require the following tools:

- Drill
- 8mm and 16mm drill bits
- Bradawl
- Screwdriver
- Mallet
- Chisel
- Pencil



Note: Purchase key separately (ERA Ref: 506-52).

- Select position of Door Security bolt on door.
- Open door, mark hole position in centre of edge. Drill a 16mm hole to a depth of 64mm. Place security bolt in hole, mark position of forend plate and recess into door edge if necessary.
- Remove security bolt. Using the key, inserted into the rack, mark the position of the keyhole on the inside only. Drill an 8mm hole through half the width of the door plus a further 9mm. Place security bolt in the hole and screw the forend plate to the door edge. Test working operation and fit keyhole escutcheon. Close door and turn bolt with the key to mark a hole in the centre on the fixed frame. Drill a 16mm hole to a depth of 19mm in fixed frame. Screw receiver plate to frame, recess if necessary.



Additional Information

Operation - Turn the key to lock / unlock.

Security Tip - We recommend fitting 2 security bolts for each external door and at least one for internal doors.

Maintenance - Use moist cloth only, household abrasives or solvents may affect surface finish.