

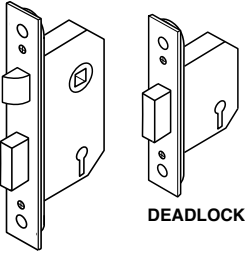
# Installation Instructions - 5 Lever Insurance Approved Security Sashlock & Deadlock



5642/101/00  
Rev. A.

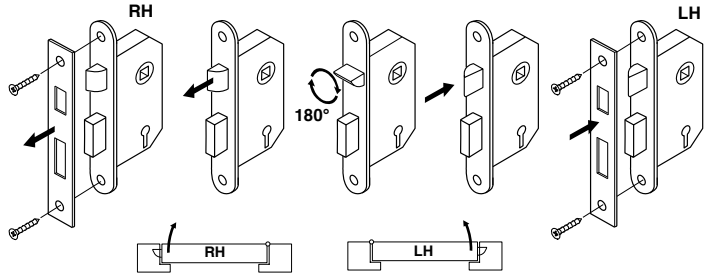
Certified to Thief Resistant British Standard 3621: 2007

## SASHLOCK

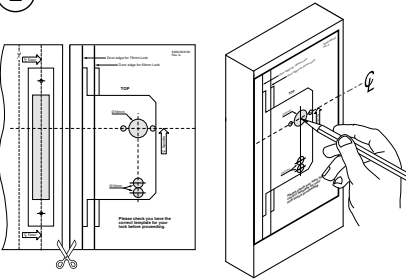


DEADLOCK

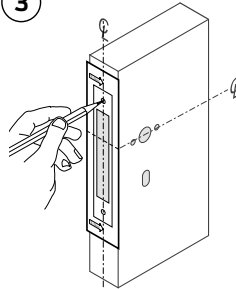
## 1 Changing Handing of Sash Lock (if required)



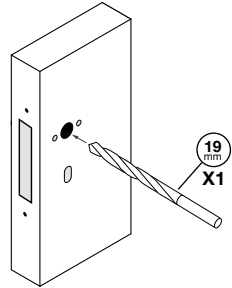
## 2 Installation of Lock



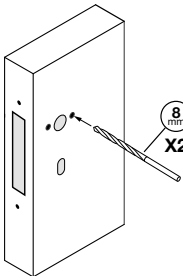
## 3



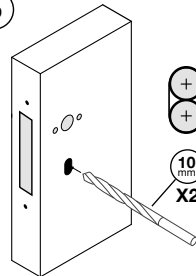
## 4



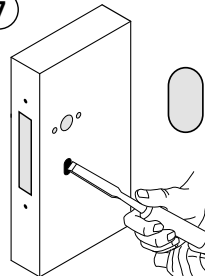
## 5



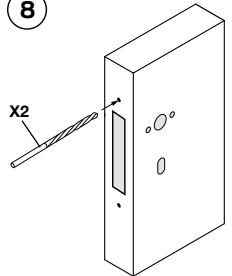
## 6



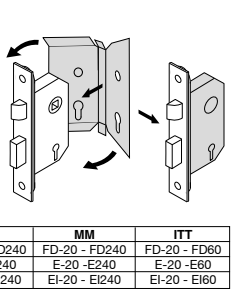
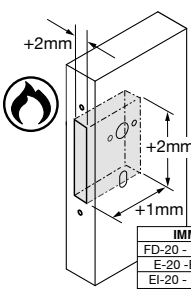
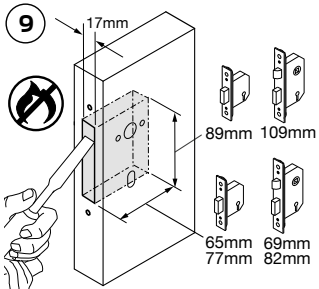
## 7



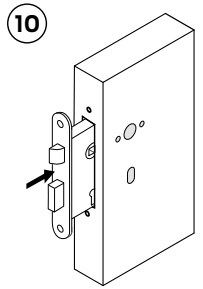
## 8



## 9

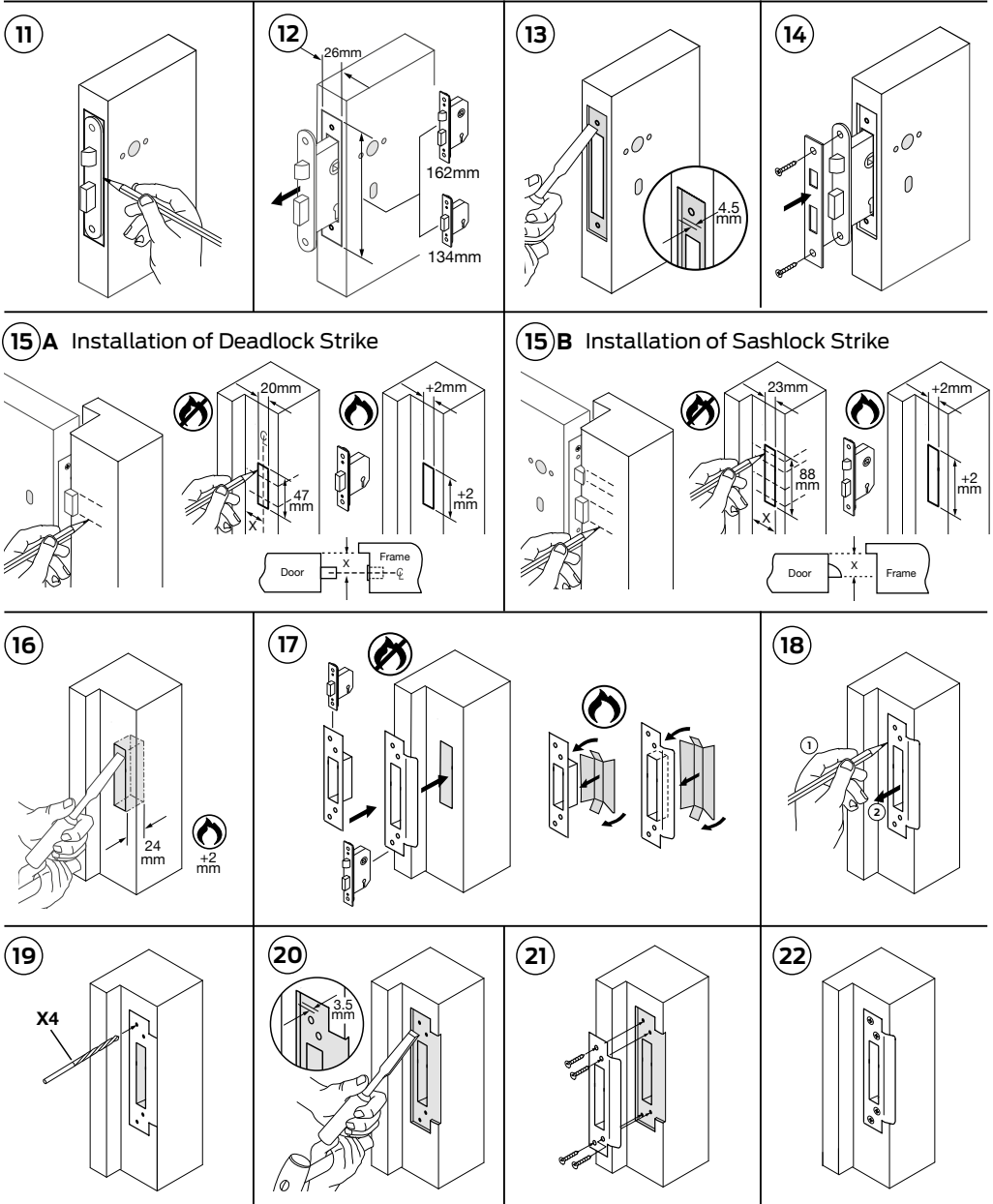


## 10



IMM	MM	ITT
FD-20 - FD240	FD-20 - FD240	FD-20 - FD60
E-20 - E240	E-20 - E240	E-20 - E60
EI-20 - EI240	EI-20 - EI240	EI-20 - EI60

# Installation Instructions - 5 Lever Insurance Approved Security Sashlock & Deadlock



PRODUCT REF: LEGGE 5641/5761	
<b>CE</b>	 ALLEGION 35 Rocky Lane Birmingham, B6 5RQ England
1121 - CPR - AG5126	2016
EN 12209 : 2003:2005 2   M   8   1   0   F   7   K   D   0   B	

Deadlock

PRODUCT REF: LEGGE 5642/5762	
<b>CE</b>	 ALLEGION 35 Rocky Lane Birmingham, B6 5RQ England
1121 - CPR - AG5127	2016
EN 12209 : 2003:2005 2   M   8   1   0   F   7   K   D   2   B	

Sashlock