

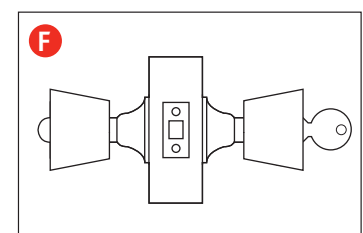
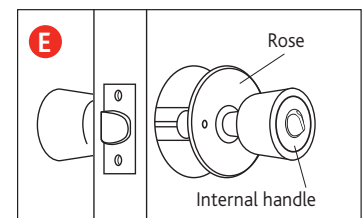
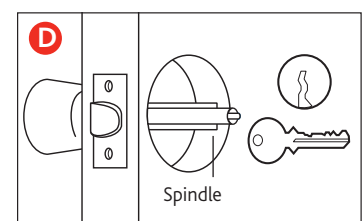
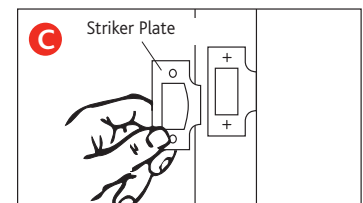
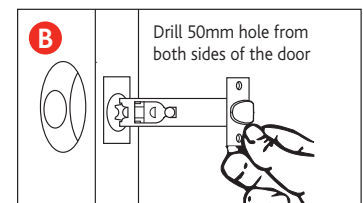
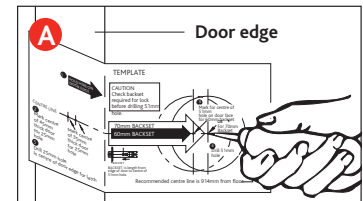


## 170-32 Passage Lock Set Fitting Instructions

### Installing Passage Door Set

To fit the Door Set you will require the following tools:

- Power Drill
- 50mm and 25mm drill bits
- Chisel
- Posidriv Screwdriver
- Bradawl
- Hammer

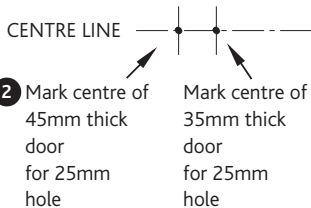


- A** Mark the centre of door edge and centre hole on the door face using the enclosed template. Using the centre line on the template mark the frame. From this mark measure into the centre of the frame and mark it
- B** Drill a 50mm hole through the door face as marked and a 25mm hole in the door edge long enough to reach through to the 50mm hole already drilled. Insert the latch into the door and mark around the forend. Recess to a depth of 2mm to allow latch to fit flush against the door. Fit latch using the screws provided
- C** Drill a 25mm hole in the frame where previously marked (if plastic dust pocket is used, chisel frame to suit). Screw striker plate over the hole using the screws provided (recess if necessary)
- D** Insert external handle into the latch ensuring the spindle and stems position correctly into the latch and key hole is as shown. Press flush against the door
- E** Insert internal handle over the spindle ensuring the fixing holes on rose are horizontal. Use bolts provided to fasten handles together
- F** Check operation of lock set by turning key or internal thumb turn to ensure the handle locks

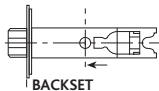
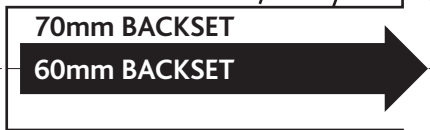
# Template

## CAUTION

Check backset required for lock before drilling 50mm hole



5 Drill 25mm hole in centre of door edge for latch



**BACKSET:** is length from edge of door to centre of 50mm hole

